

Thank you for choosing the GE Blood Glucose Monitoring System GM550. Please read this manual thoroughly before testing. It provides all information you need to use the product.

The GE Blood Glucose Meter GM550 must only be used with GE Blood Glucose Test Strip GS550 and RIGHTEST GC550 Control Solution. The application of other Test Strips or control solutions can lead to incorrect results.

We hereafter call GE Blood Glucose Monitoring System GM550 as GE GM550 Blood Glucose Monitoring System, GE Blood Glucose Meter GM550 as GE GM550 Meter, and GE Blood Glucose Test Strip GS550 as GE GS550 Test Strip for short.

It is recommended to monitor blood glucose regularly. GE GM550 Blood Glucose Monitoring System is accurate and easy-to-use and is thus your reliable assistant for diabetes management.

GE GM550 Blood Glucose Monitoring System is manufactured and supported by Bionime Corporation. If you have any question or concern, please contact your local Bionime Customer Service or email to rightest@bionime.com.

GE GM550 Blood Glucose Monitoring System is intended *in vitro* diagnostic use only (outside the body) and coding is auto detecting. The testing result is calibrated to plasma equivalent with whole blood from capillary. Capillary whole blood can sample from the fingertip, palm or forearm. You may consult your healthcare professional for instructions on how to use the system correctly. Our customer support staff are also available to assist you.

Table of Contents

About GE GM550 System

Package of GE GM550 System Kit	6
GE GM550 Meter	8
Precaution	12
GE GS550 Test Strip	14

Being Ready for Test

Meter activation and Battery Change	16
Setting Up Your Meter- Setting the Time, Volume and Date	18
Turning On / Off the Metert	22
Turning On / Off the Backlight	22

Testing Procedure

Performing a Blood Test	23
Alternative Site Testing (AST)	27
View window appearance	29

Table of Contents

Quality Control

"Lo" and "Hi" readings	30
Quality Control Test	31

Review Your Test Memory

Performing a Quality Control Test	33
Caring for your meter	35
Recalling Test Result and Average	36

Error Messages and Trouble Shooting	39
Specification	43
Limitations	45
Customer Service	46
Warranty	47
Log Book	48

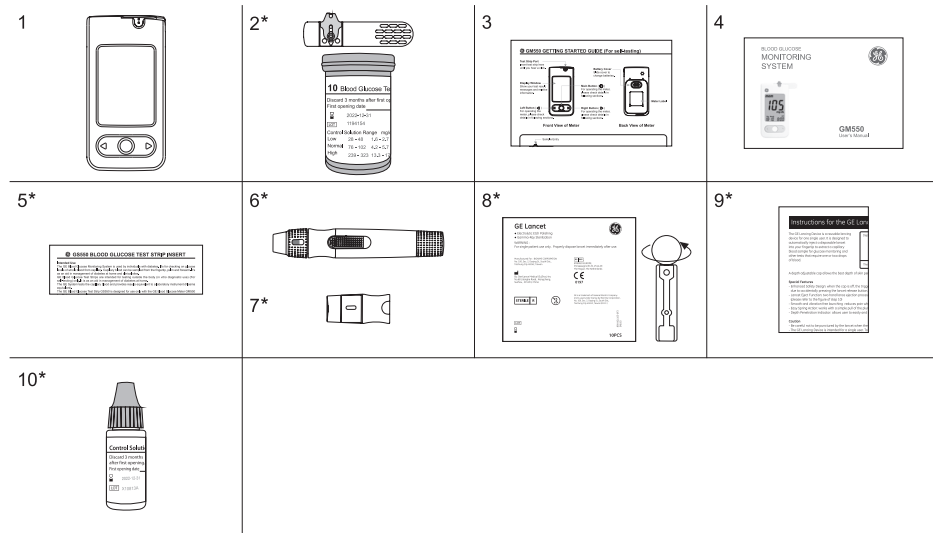
Package of GE GM550 System Kit

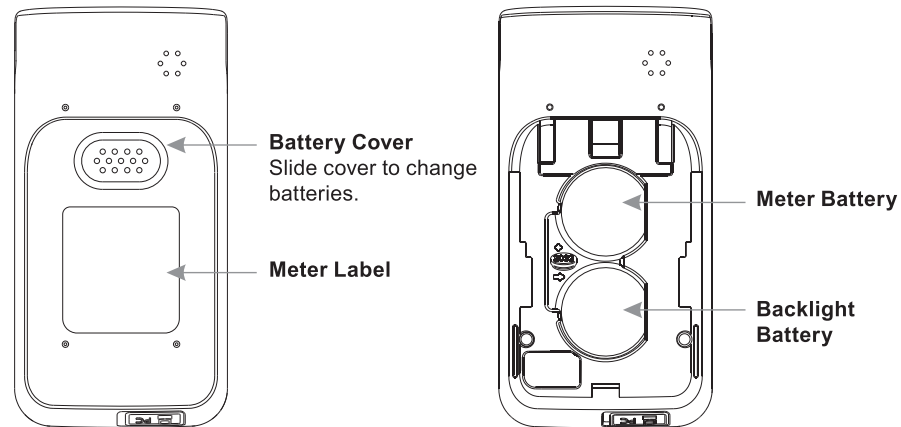
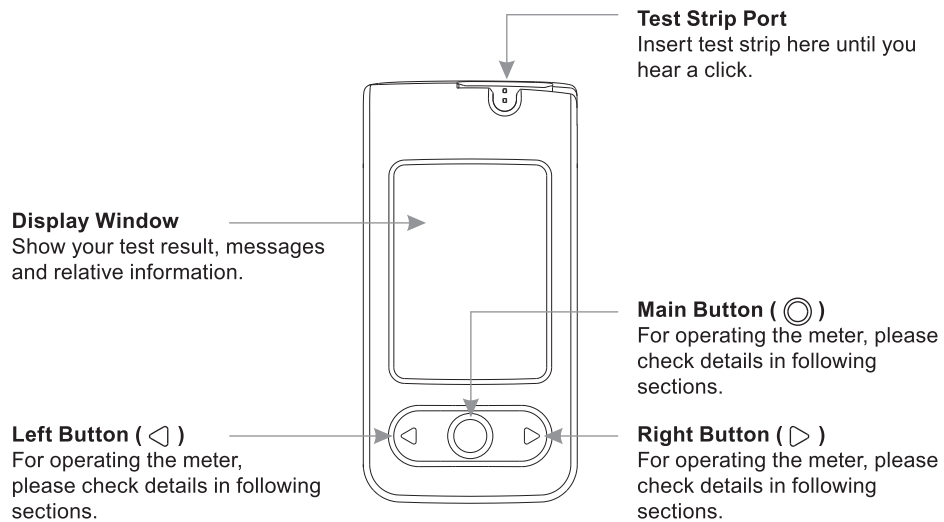
Your GE Blood Glucose Monitoring System GM550 consists of several items. Please identify each item of your system and learn what they're called and how they're used.

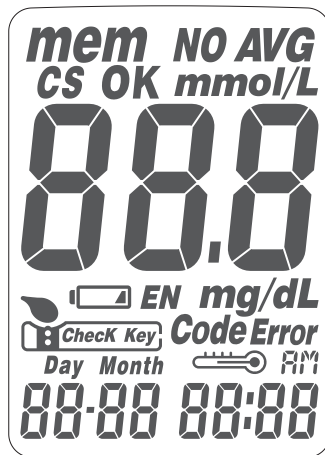
These items are included in your GE Blood Glucose Monitoring System GM550:

1. GE GM550 Meter (with 2 CR2032 batteries installed)
 2. GE GS550 Test Strips (10/25 pcs) *
 3. Getting Started Guide
 4. GE GM550 User's Manual
 5. GE GS550 Test Strips Package Insert *
 6. GE GD500 Lancing Device *
 7. Clear Cap *
 8. Disposable Sterile Lancets (10 pcs) *
 9. Instructions for the lancing device *
 10. RIGHTEST GC550 Control Solution *
 11. RIGHTEST Control Solution Package Insert (not shown) *
 12. Warranty Card (not shown) *
 13. Carrying Case (not shown) *
- (* Different packages have different bundled items. Some of packages might not include * items.)

Package of GE GM550 System Kit







mem	Indicates a test result stored in memory		Tell when to apply the blood sample
NO AVG	Indicates a test result, not joining into the Average function of this meter		Test strip
AVG	Indicates with the average result	Code Error	Warns when using the strip, not suitable for your region test, or strip error
CS	Indicates a control solution test result	<small>Day Month</small> 00-00	Current date under time mode or Testing date under memory mode
mmol/L mg/dL	Unit of test result		Indicates if the environmental temperature is exceeded during testing
000	Test result	AM	Indicates the time in 12H format
	Warns when the battery is low or must be replaced	00:00	Current time under time mode or Testing time under memory mode
OK EN Check Key		Manufacturing use only	

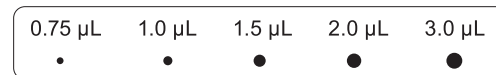
Precaution

- Before using the GE GM550 Blood Glucose Monitoring System to test your blood glucose, please read instructions for use.
- The GE GM550 Meter is only compatible with the GE GS550 Test Strip. The GE GM550 Meter must only be used with GE GS550 Test Strip and RIGHTEST GC550 Control Solution. The application of other Test Strips or control solutions can lead to incorrect results.
- GE GM550 Blood Glucose Monitoring System is intended for self-testing. It should not be used to diagnose diabetes mellitus.
- GE GM550 Blood Glucose Monitoring System has not been validated for use on neonates. Therefore, it's not intended for use of neonates.
- GE GM550 Blood Glucose Monitoring System is not intended for arterial blood testing .
- Do the test at least 30 minutes after moving into a different location with significant change in temperature.
- Dispose of used batteries properly.
- Please note the System kit contains small parts like test strips which could result in a choking hazard for children.

Precaution

- Prevent water from entering the meter. Never immerse the meter or hold it under running water.
- The minimum blood sample size for testing is 0.75 μL : (•)

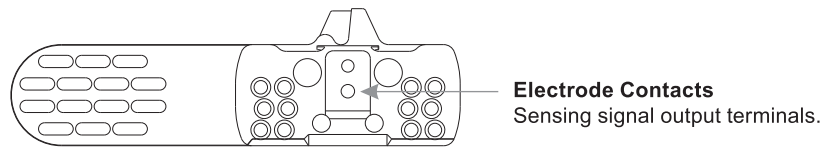
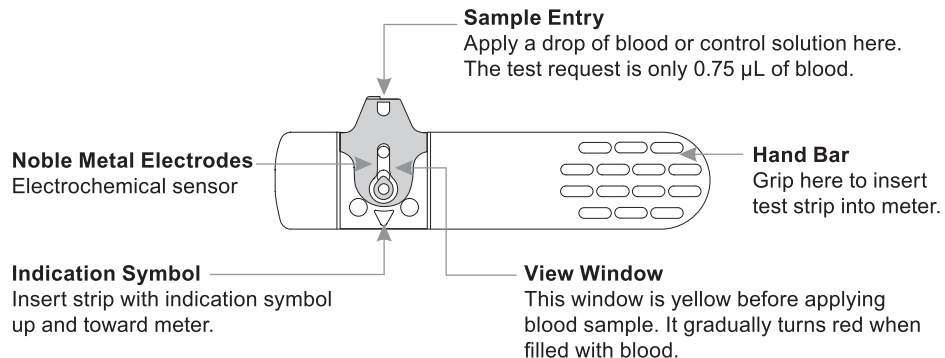
Sample Size Example



Please take a minimum of 0.75 μL to do the test on blood glucose monitoring system. Blood sample size above 3.0 μL might contaminate the meter. A blood sample size below 0.75 μL may give an inaccurate test result. In this case, repeat the test with a new test strip.

The GE GM550 Meter must only be used with GE GS550 Test Strips and RIGHTEST GC550 Control Solution.

The application of other Test Strips or control solutions can lead to incorrect results.



PRECAUTION

- Re-cap the test strip vial immediately after taking out a test strip.
- Do not reuse test strips. Test strip can be only used once.
- Do not use expired test strips.
- Record the date of opening a new test strip vial for the first time. Use test strips within 12 months after first opening or until the expiration date printed on the label (whichever comes first).
- Store the test strips in a cool (4°C - 30°C or 39°F - 86°F) and dry location (< 90% relative humidity). Do not expose to direct sunlight or heat.
- For detailed information, please refer to the GE GS550 Test Strips Package Insert.
- If the GE GM550 meters and strips are exposed to a high temperature difference, please wait 30 minutes before measurement.
- For detailed strip information, please refer to GE Blood Glucose Test Strip GS550 Insert.

Meter activation and Battery Change

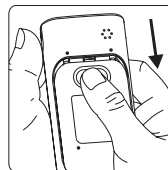
Your meter comes with 2 CR2032, 3 volt, batteries installed. Two new batteries will provide power to perform about 1,000 tests under normal use. You can press the main button or insert a strip to activate your meter.



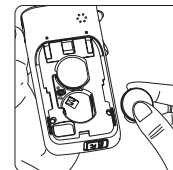
NOTE

- When meter backlight has no function, you cannot see the backlight, please change your backlight battery.
- When the backlight battery is running out of power, your meter still works properly but without backlight function.

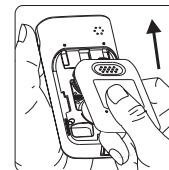
Meter activation and Battery Change



1. Turn the meter over.
Press and push battery cover to open.



2. Install the batteries.
Be sure to put batteries in correct direction.



3. Slide the battery cover back until it snaps into place.

4. The meter performs a self test.
5. Press any button to exit the self-test and enter Setting Mode.
6. Set the time and date when the batteries are replaced. See Chapter "Setting Up Your Meter- Setting the Time, Volume and Date" on page 18. Test results are still stored in the memory.



PRECAUTION

- Please follow the local regulation and discard a used battery properly.

Setting Up Your Meter- Setting the Time, Volume and Date

You can enter Setting Mode by below two ways.

1. Reload battery

After removing the battery, please press the main button for several times until no signal on screen, then follow the battery installation steps to load batteries. The meter will do self test. Press the main button to exit the self test and enter Setting Mode.

2. With Battery inserted

Press the main button first to turn on the meter. Then press and hold the main button for 7 seconds (the meter will first show backlight, then be turned off during this period, please keep pressing) until you hear a beep, indicating you have successfully entered Setting Mode. The display screen will show setting data.



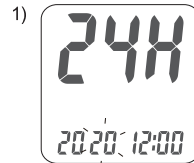
NOTE

- When you keep pressing the main button for 2 seconds, the display on screen will show backlight. Keep pressing the main button till display is off.
- When you keep pressing the main button for 4 seconds, the display on screen will turn off. Please don't care it. Keep pressing the main button till entering setting data.
- Quick press the main button allows you to change setting. However, if you want to return to the time mode, you need to go through all the settings first by pressing quickly the main button.

Setting Up Your Meter- Setting the Time, Volume and Date

1. Year setting

With the year format blinking, press the Left or Right button to adjust it. Then press the Main button to confirm it. Then it will move to Month setting.



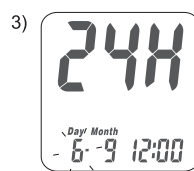
2. Month setting

With the month blinking, press the Left or Right button until the current month appears. Then press the Main button to confirm it and move to Day setting.



3. Day setting

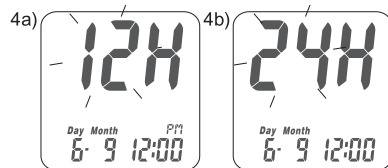
With the day blinking, press the Left or Right button until the current day appears. Then press the Main button to confirm it and move to Time format setting.



Setting Up Your Meter- Setting the Time, Volume and Date

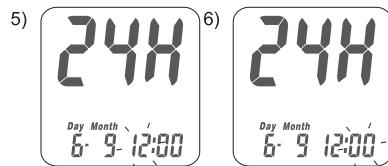
4. Time format 12/24 H selection

With the time format blinking, press the Left or Right button to adjust it. Then press the Main button to confirm it and move to hours setting.



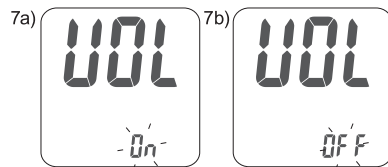
5. Hour setting

With the hour blinking, press the Left or Right button until the current hour appears. Then press the Main button to confirm it and move to minute setting.



6. Minute setting

With the minute blinking, press the Left or Right button to adjust it. Then press the Main button to confirm it. Then it will move to volume setting.



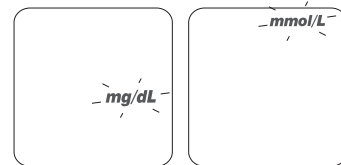
7. Volume setting

With the volume blinking, press the Left or Right button to turn it on or off. Then press the Main button to confirm and move to measurement of unit setting.

Setting Up Your Meter- Setting the Time, Volume and Date

8. Setting the Unit of Measurement

With milligrams per deciliter (mg/dL) or millimole per liter (mmol/L) blinking, press the Left or Right button to switch. Then press the main button to confirm it and finish the settings.



9. Ending setting

After measurement of unit settings, for confirmation you will hear a beep (if volume is turned on). All the settings are saved and completed and will return to time screen. (If Volume is turned off, the display will directly return to time screen without a sound of "beep".)



NOTE

- When you do not do any settings of meter for over 2 minutes, the meter will leave setting mode and power off automatically.
- Your GE GM550 Meter default is set according to your local preference.

Turning On / Off the Meter

1. How to turn on the Meter

Press the Main button or Insert a test strip.

2. Manual Power off

If you want to turn off the meter, please keep pressing the Main button for 4 seconds.

3. Auto Power off

The meter will power off automatically if you don't operate it over 2 minutes.

Turning On / Off the Backlight

1. How to turn on the Backlight

Keep pressing the Main button for 2 seconds.

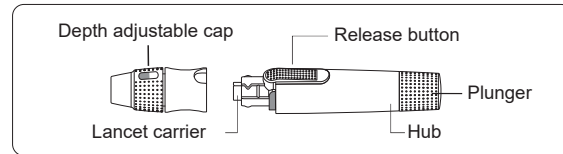
2. Manual Backlight off

If you want to turn off the backlight, please keep pressing the Main button for another 2 seconds.

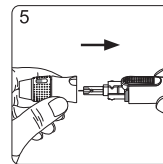
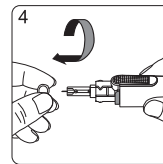
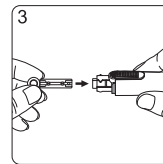
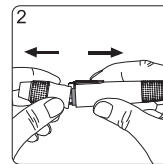
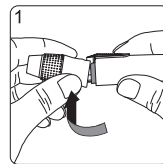
3. Auto Backlight off

The meter backlight will turn off automatically if you don't operate it over 10 seconds.

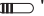


Performing a Blood Test

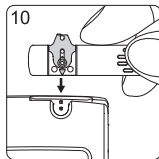
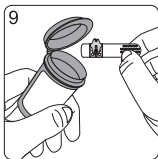
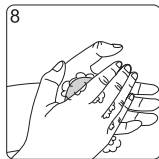
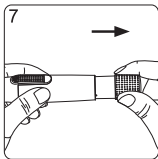
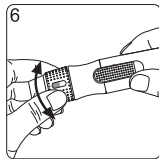


1. Hold the depth adjustable cap in one hand and hold the hub in the other hand. Bend the cap towards the down side, until a gap appears between the cap and hub.
2. Pull the cap and hub off in opposite directions, remove the cap.
3. Insert a new disposable lancet firmly into lancet carrier.
4. Twist off and set aside the protective cover of the disposable lancet.
5. Replace the depth adjustable cap.



Performing a Blood Test

- Choose a depth of penetration by rotating the top portion of the depth adjustable cap until the setting depth matches the window. Settings are based on skin type "  " for soft or thin skin; "  " for average skin; "  " for thick or calloused skin.
- Hold the hub in one hand and pull on the plunger in the other hand. The device will be cocked. Release the plunger, it will automatically move back to its original position near the hub.
- Wash your hands with warm soapy water and dry thoroughly.
- Take one strip from the vial. Re-cap the vial cap immediately.
- Insert the strip into the strip port of the meter with the indication symbol facing up. The meter confirms the insertion of the strip with a beep (if volume is turned on).

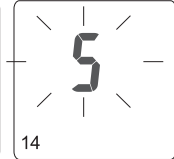
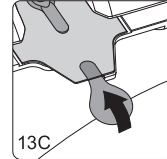
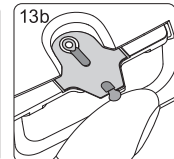
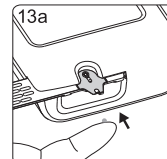
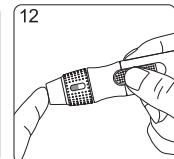
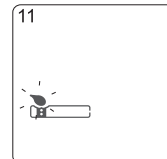


NOTE

- The meter will automatically detect Code number on strip. You don't have to check the Code number on the meter display and strip vial.

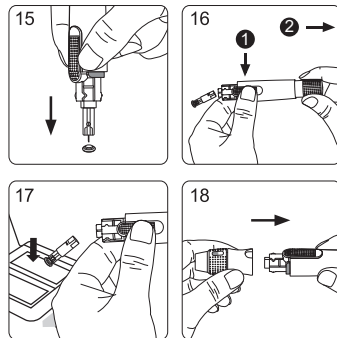
Performing a Blood Test

- A blood drop symbol appears and is accompanied by a further beep (if volume is turned on). Now you can apply the blood sample within 2 minutes.
- Place the lancing device against your fingertip and press the release button.
- Touch and hold the drop to the edge of sample entry until you hear a " beep " (if volume is turned on) and the View Window is totally filled with blood. If the View Window is not totally filled with blood or the test does not start, please discard the test strip and repeat the test with a new test strip.
- You will see the countdown mode on the screen. After 5 seconds, the test result appears.



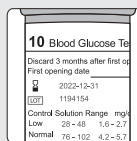
Performing a Blood Test

15. Pull off the depth adjustable cap. Without touching the used disposable lancet, stick the lancet tip into the protective cover.
16. Holding the release button in one hand (see picture 16, step 1) and pulling on the plunger in the other hand (see picture 16, step 2) will safely eject the used disposable lancet.
17. Discard the used disposable lancet into an appropriate puncture-proof or biohazard container.
18. Replace the depth adjustable cap after finishing the test.



PRECAUTION

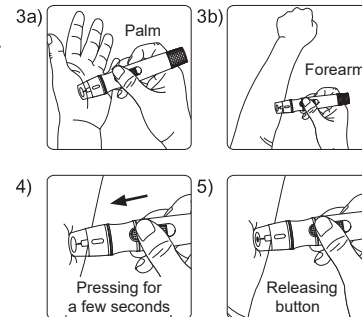
- Do not apply your blood drop to the sample entry on the strip until you see the "☼" appear. The meter is performing an internal test and will display "☼" and "Error" if you apply blood too soon. Please repeat the test with a new test strip.
- Record the date of opening a new test strip vial for the first time. Discard the vial of test strips after 3 months from opening.
- Always keep the metal contact points of the test strip entry point clean. If any dust or impurities are present, please clean with a small soft brush, otherwise the meter may not work correctly when you insert a test strip.



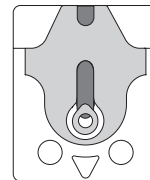
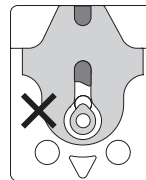
Alternative Site Testing (AST)

Alternative site testing-palm or forearm blood sampling

1. Choose Clear Cap and follow step 1 - 5 on page 23.
2. Massage the puncture area of palm or forearm for a few seconds.
3. Immediately after massaging the puncture area, press and hold the lancing device with the Clear Cap against palm or forearm.
4. Then press the release button.
5. Continue holding the lancing device against palm or forearm and gradually increase pressure for a few seconds until the blood sample size is sufficient.
6. Follow step 9 - 18 on page 24 - 26 to complete the test and discard the used disposable lancet.



Make sure your blood sample covers the whole area of the View Window to get an accurate test result. An insufficient blood sample will result in an error message ("Er4"). If this occurs, repeat the test with a new test strip.



Insufficient blood sample Enough blood sample



PRECAUTION

- The glucose test results of blood samples taken from different site might be varied in certain conditions such as your glucose is changing rapidly following a drink, a meal, insulin dose or exercise. In these cases, only fingertip should be used.
- DO NOT test on the palm or forearm if you are testing for hypoglycemia (Low blood glucose).
- Fingertip samples can show the rapid change of glucose faster than palm or forearm samples.
- As the blood flow taken from forearm is slower than fingertip or palm, we recommend using the GE GD500 lancing device with Clear Cap for testing sites other than fingertip.



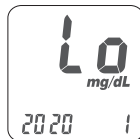
PRECAUTION

- Check the expiration date printed on the strip vial every time you use a test strip. Do not use expired test strips.
- Use each test strip immediately after removing from the vial.
- Do not reuse test strips.
- If the GE GM550 meters and strips are exposed to a high temperature difference, please wait 30 minutes before measurement.
- Apply the blood drop only on the sample entry of the test strip.
- Please don't drip or inject the blood sample directly by syringe to the sample entry of test strip. Doing this might contaminate the meter or cause damages and is not recommended.



"Lo" and "Hi" readings

The GE GM550 Meter displays results between 10 and 600 mg/dL (0.6 and 33.3 mmol/L). If your test result is below 10 mg/dL (0.6 mmol/L), "Lo" will appear on the screen. Please repeat your test with by a new test strip. If you still get "Lo" result, you should immediately contact your healthcare professional.



If your test result is above the high end of the system's detection range 600 mg/dL (33.3 mmol/L), "Hi" will appear on the screen. Please repeat your test with a new test strip. If you still get "Hi" result, you should immediately contact your healthcare professional.



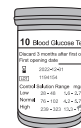
NOTE

- If your blood glucose result is unusually high or low, or if you question your testing results, repeat the test with a new test strip. You can also run a Quality Control Test to check your meter and test strip. If the test result still remains unusually high or low, contact your healthcare professional immediately.
- If you are experiencing symptoms that are not consistent with your blood glucose test results and you have made sure to follow all instructions of this manual, contact your healthcare professional immediately.

Quality Control Test

Please use Control Solution tested with GE GM550 Blood Glucose Monitoring System under Control Solution Mode. If the test result is within the Control Solution Range printed on the strip vial label, the GE GM550 Blood Glucose Monitoring System passes Quality Control Test. That means your GE GM550 Blood Glucose Monitoring System is working correctly.

Control Solution Range:
Example of Control Solution Range printed on your test strip vial label.



Control Solution Range mg/dL mmol/L		
Low	26 - 48	1.6 - 2.7
Normal	76 - 102	4.2 - 5.7
High	239 - 323	13.3 - 17.5

When should a Quality Control Test be performed ?

- Whenever you want to check if your system is working properly or not.
- Whenever you want to practice testing and check correct procedure.
- To prepare for your initial blood glucose test.
- To check the GE Blood Glucose Test Strip GS550 when you open a new vial of strips.
- To check your GE Blood Glucose Meter GM550 after it has been dropped, damaged or exposed to liquids.
- When you suspect that your test results are inaccurate, or if your test results are not consistent with the way you feel.

Quality Control Test

The possible reasons your Control Solution results are out of the range :

- Your Control Solution has expired or has been opened 3 months ago.
- Your test strip has expired.
- You left the cap of the test strip vial opened or the control solution off for a long time.
- You didn't perform the test procedure correctly.
- Malfunction of the meter or the test strip.

If Control Solution results are out of range, your Bionime Blood Glucose Monitoring System may not be working properly. Repeat the Quality Control Test. If your Control Solution results outside the range still exist, do not use the Blood Glucose Monitoring System to test your blood glucose and contact your Bionime Customer service.



PRECAUTION

- Each time you open a new bottle of Control Solution, write the discard date on the label. Control Solution is good for 3 months after opening the bottle, or until the expiration date printed on the label, whichever comes first.

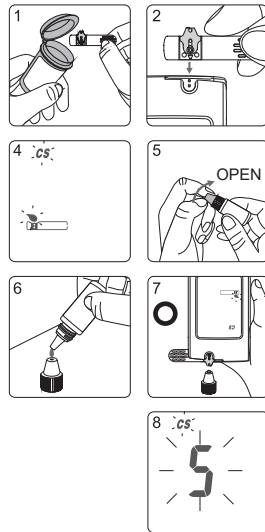
Example of Expiration Date:



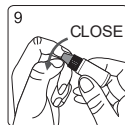
Exp. Date 2020-12-31

Performing a Quality Control Test

1. Take one test strip from vial and Re-cap the vial cap immediately.
2. Insert the test strip with view window, facing up, into test strip port.
3. While the blood drop symbol flashing, press and hold the main button for over 3 seconds until the "CS" symbol appears.
4. You will see blinking " " symbol and "CS" symbol on the screen, prompting you to apply Control Solution.
5. Shake the bottle of Control Solution well before opening the cap. Then open the bottle and put the cap on the table.
6. Drip a drop of Control Solution on the top of the cap.
7. Gently touch sample entry of the strip with the Control Solution on the top of the cap.
8. When you hear a beep (if volume is turned on) please wait for the test result. The screen will display the countdown number from 5.

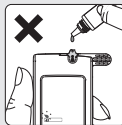


9. Tightly replace the cap on the Control Solution bottle.
10. The Control Solution result appears. Compare your Quality Control Test result to the Control Solution Range printed on the test strip vial label.



PRECAUTION

- Your Control Solution results will not be calculated for average reading but still can be recalled. The Control Solution Test result will be shown with "**CS**" symbol on the screen.
- Our suggestion environment for Control Solution Test is 15 - 40°C.
- Before "☹" and "**CS**" appears, please don't touch the Control Solution to the sample entry on strip because the meter is still in an internal check. If you do so, the meter will show "☹" and "**Error**". Accompanied by beeps (if volume is turned on)
- Don't drip the Control Solution to sample entry of the strip directly. The reagent on strip might be sucked into the bottle of Control Solution and might cause the degeneration of Control Solution. Doing this might contaminate the meter via the test strip port as well.
- Don't touch the tip of the control solution bottle. If you have touched it, please clean up with water.



Maintenance

Keep your meter and test strip free of dust, water or any other liquid. Store the meter in the carrying case if you do not use it. If meter is dropped or damaged, perform a Quality Control Test before doing a blood glucose test.

Cleaning Meter

Clean the outside of the meter with a damp cloth and mild soap/detergent. Protect the test strip port from getting wet.

Please always keep the two metal contact points of the test strip port clean. If you find it's covered by dust or impurities, please clean it with a little soft brush.

The meter might not be activated when you insert a test strip but the contact points are heavily covered by dust or impurities.

Recalling Test Result and Average

The GE GM550 Meter is able to store 500 test results with time and date automatically. If your meter has stored 500 results, which is the maximum memory of the meter, the newest test result will replace the oldest one. To recall your test memory, start the meter without test strip inserted.

1. Press the main button to switch from the time mode to the Memory screen. First you will see the "mem" symbol on the up per left corner of the display. When you press the right button, the latest result will be displayed. By pressing the right button sequentially former test results will be shown in historical order. You will see the sequence number on the lower right corner and the year on the lower left corner of the display followed by date and time of the measurement.



- Note:** The right button is for reviewing the tests with sequence number increasing, and the left button is for reviewing tests with sequence number decreasing. The sequence no "1" is the latest result while sequence no "500" is the oldest test result.
2. To finish reviewing memory tests, press main button again, and you will enter the Average screen. By pressing the right button, the display shows "AVG" on the upper right corner of the display and the average value for the actual day. By sequentially pressing the right or left button you will get to the 1-day, 7-days, 14-days, 30-days and 90-days average of your blood glucose values. You will see the number of the calculated days on the lower left corner and the number of the calculated readings on the lower right corner.

Recalling Test Result and Average



3. Non-Averaging set and canceled:
You may select the unwanted or doubtful test results, to exclude them from the average calculation, after your every test. After you finished your test in the test mode, you can exclude the unwanted result. Keep pressing the right button until you see the symbol "NO AVG" in the top right corner of the screen. By keeping the right button pressed and pressing the main button simultaneously to confirm the value as "NO AVG". Now this value is flagged by the symbol "NO AVG" in the up per right corner of the screen. If you want to cancel this non-averaging setting, you have to stay in the test mode. First keep pressing the right button until the "NO AVG" symbol changes to "AVG" in the up per right corner of the screen. To confirm this original status you again simultaneously press the main button to confirm the "AVG" status. Now the value will be stored as a regular value and included in the average values.



NOTE

- The average function is related to the time setting. You must set the time right and have enough time intervals on the basis of current inquiry time, to make sure that the average test results will show.

Use the 14-days average for example; if your current inquiry time is 2016/1/30, then that you must check that you have tested blood glucose in the past 14 days before 1/30, including today. If not, the 14-day average will show no figure.

- The Non-averaging/re-averaging function only works in the test mode and when you get the value. In the MEM mode, you can not perform this action.

4. Quick Searching: If you want to see all values automatically displayed in sequence, first enter the memory mode. Then keep pressing the right or left button for 2 seconds. (right button is for searching the tests the latest value to the oldest one; by using the left button you can scroll from the oldest to the latest one). Anytime you want to stop just release the pressed button. It will stop and display the current displayed value. You can use this way to find a particular reading you want to check.
5. Reading right after test: If you just finish the test, press the main button to enter the mem (memory) screen and review the latest test result.



NOTE

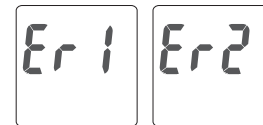
- Your Control Solution results will be automatically non-averaged without selecting, but still can be recalled. The Control Solution Test results will show with "**CS**" symbol under memory screen.



PRECAUTION

- You have to set the time and date to activate the average function.
- The "Lo", "Hi" results, the Control Solution results and the test result made out of normal temperature range (< 10°C, > 40°C) are not calculated in the average.

Er1 - The inserted test strip has been used or damaged. Please use a new test strip from vial.



Er2 - Meter has malfunctioned. Do the Quality Control Test or reinstall the batteries to check if the meter works properly.



Er3 - Signal transmission is disrupted, repeat the test with a new test strip.

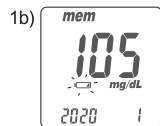
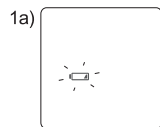


Er4 - Applied blood volume is insufficient, please repeat the test with a new test strip.

Above, if error screen still appears contact your local Bionime Customer Service.

Battery Error

1. The "  " symbol is blinking when the battery power is low. Please change the meter battery as soon as you can. You can still do the test.
2. The "  " and " **Error** " symbols are blinking when the battery is too low. Meter can not do the strip test. Please change the meter battery immediately.





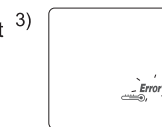
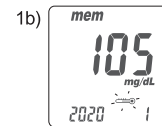
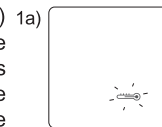
NOTE

- When meter backlight has no function, you cannot see the backlight, please change your backlight battery.
- When the backlight battery is runnign out of power, your meter still works properly but without backlight function.



Temperature Error

In order to get accurate test result, perform testing between 10 - 40°C (50 - 104°F).

1. When the ambient temperature is 0 - 9°C (32 - 49°F) or 41 - 50°C (105 - 122°F) the "  " warning symbol will be blinking (1a), you still can do the test but the test result is only for reference, because the test result under these ranges of temperature might not be correct. In the memory screen this value will be flagged with "  " symbol (1b). Repeat the test at an area with temperature between operating range.(10 - 40°C or 50 - 104°F)
2. When you move from the area with temperature outside the operating range of test strip to another area with temperature inside operating range of test strip, please wait for 30 minutes before you do the test.
3. When the temperature is below 0°C (32°F) or over 50°C (122°F), Meter can not do the test and the " **Error** " symbol will blink with thermograph symbol displaying on screen in this condition. Please move the meter to environment with temperature between 10 - 40°C (50 - 104°F) and repeat the test after 30 minutes.



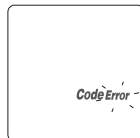
Sampling Error

Please don't apply the blood drop to the sample entry of the strip before the meter displays "  ". If you do so, the meter will display " **Error** " and "  " accompanied by beeps (if volume is turned on). Please discard the test strip and repeat the test with a new test strip.



Code Error

It means the strip is not inserted right or to the proper position. Please reinsert the strip following the instruction. If Code Error repeats again, it means you use wrong strip or strip not suitable for your region test. After you make sure you use the right strip and the strip is inserted right, but error screen still appears, please contact your local Bionime Customer Service.




Meter Malfunction

If the meter can not be started, please follow the steps below:

1. Open the battery cover, remove the batteries.
2. Wait for 5 minutes and insert the batteries as described "Meter activation and Battery change" on page 16 - 17.

The meter should be working normally after finishing above steps. If not, please contact your local Bionime customer service.

Measurement Technology	Oxidase Electrochemical Sensor
Measurement Calibration	Plasma
Sample	Whole blood: capillary
Minimum Sample Volume	0.75 μ L (microliters)
Measuring Range	10 - 600 mg/dL (0.6 - 33.3 mmol/L)
Test Time	5 seconds
Memory Capacity	500 blood glucose test results with date and time
Power Saving	Turn off automatically 2 minutes after last user action / Press the "  " button for 4 seconds.
Operating Temperature	10°C - 40°C (50°F - 104°F)
Operating Relative Humidity	10 - 90%

Specification

Hematocrit	30 - 57%
Power Supply	2 CR2032 batteries
Meter Battery Life	About 1,000 tests
Meter Dimension	90.6 mm x 46 mm x 16.5 mm
Meter Weight	53.0 ± 5 g with batteries
Monitor	LCD display
Display Area	46.6 mm x 33 mm
Meter Storage Conditions	-10°C - 60°C (14°F - 140°F)
Test Strip Storage Conditions	4°C - 30°C (39°F - 86°F), < 90% relative humidity

Limitations

- GE GM550 Blood Glucose Monitoring System is not intended for serum or plasma test.
- Inaccurate test results may be obtained at high altitude more than about 3,048 meters (10,000 feet) above sea level.
- Severe dehydration and excessive water loss may cause inaccurately low results.
- GE GM550 Blood Glucose Monitoring System has not been validated for use on neonates.
- For detailed strip information, such as usable HCT range, storage condition and interference, please refer to GE Blood Glucose Test Strip GS550 Insert

















NOTE

- Suggest not to use this meter close to source of strong electromagnetic radiation, to avoid interference with proper operation.
- Suggest to keep meter free of dust, water or any liquid.

We sincerely like to provide complete, considerate services to our customers. Please review all the instructions to make sure you are performing the steps correctly. If you have any questions or in case of problems with the GE GM550 products, please contact your local Bionime customer service.

Description of used symbols

 IVD	For <i>in vitro</i> diagnostic use	 LOT	Lot number	 EC REP	EC Representative
 i	Consult the instruction for use		Expiry date		Biological risks
	Temperature limitation		humidity limitation		Manufacturer
	CE-mark (with No. of notified body)		Direct current		For single use only
	Caution (consult instructions for use and warnings)				
	Method of sterilization using irradiation				

The manufacturer warrants that your GE GM550 Meter will be free from defects in materials and workmanship for five years from the date of purchase.

This warranty does not apply to the performance of a GE GM550 Meter that has been altered, misused, tampered with or abused in any way.

This warranty applies only to the original purchaser of the meter.

Please complete and return the enclosed warranty card to your local Bionime affiliate.

If the GE GM550 Meter and strip are exposed to a high temperature difference, please wait 30 minutes before measurement.



NOTE

- During blood glucose measurement, the GE GM550 Meter itself may come into contact with blood. Used GE GM550 Meter therefore carry a risk of infection. Please dispose of your used GE GM550 Meter after removing the battery-according to the regulations applicable in your country. For information about correct disposal, please contact your local council and authority.

Log Book

Name: _____

Address: _____

Home Phone: _____ Work Phone _____

Doctor: _____ Doctor's Phone _____

Pharmacy: _____ Pharmacy Phone _____

Insulin/Pills: _____ Log book date From: _____ To: _____

In case of emergency contact: _____

Log Book

DATE		M	T	W	T	F	S	S
Breakfast	Blood Glucose							
	Insulin/Medication							
Lunch	Blood Glucose							
	Insulin/Medication							
Dinner	Blood Glucose							
	Insulin/Medication							
Bedtime	Blood Glucose							
	Insulin/Medication							
Other	Blood Glucose							
	Insulin/Medication							
Comments								

DATE		M	T	W	T	F	S	S
Breakfast	Blood Glucose							
	Insulin/Medication							
Lunch	Blood Glucose							
	Insulin/Medication							
Dinner	Blood Glucose							
	Insulin/Medication							
Bedtime	Blood Glucose							
	Insulin/Medication							
Other	Blood Glucose							
	Insulin/Medication							
Comments								

DATE		M	T	W	T	F	S	S
Breakfast	Blood Glucose							
	Insulin/Medication							
Lunch	Blood Glucose							
	Insulin/Medication							
Dinner	Blood Glucose							
	Insulin/Medication							
Bedtime	Blood Glucose							
	Insulin/Medication							
Other	Blood Glucose							
	Insulin/Medication							
Comments								

DATE		M	T	W	T	F	S	S
Breakfast	Blood Glucose							
	Insulin/Medication							
Lunch	Blood Glucose							
	Insulin/Medication							
Dinner	Blood Glucose							
	Insulin/Medication							
Bedtime	Blood Glucose							
	Insulin/Medication							
Other	Blood Glucose							
	Insulin/Medication							
Comments								

DATE		M	T	W	T	F	S	S
Breakfast	Blood Glucose							
	Insulin/Medication							
Lunch	Blood Glucose							
	Insulin/Medication							
Dinner	Blood Glucose							
	Insulin/Medication							
Bedtime	Blood Glucose							
	Insulin/Medication							
Other	Blood Glucose							
	Insulin/Medication							
Comments								

DATE		M	T	W	T	F	S	S
Breakfast	Blood Glucose							
	Insulin/Medication							
Lunch	Blood Glucose							
	Insulin/Medication							
Dinner	Blood Glucose							
	Insulin/Medication							
Bedtime	Blood Glucose							
	Insulin/Medication							
Other	Blood Glucose							
	Insulin/Medication							
Comments								

DATE		M	T	W	T	F	S	S
Breakfast	Blood Glucose							
	Insulin/Medication							
Lunch	Blood Glucose							
	Insulin/Medication							
Dinner	Blood Glucose							
	Insulin/Medication							
Bedtime	Blood Glucose							
	Insulin/Medication							
Other	Blood Glucose							
	Insulin/Medication							
Comments								

DATE		M	T	W	T	F	S	S
Breakfast	Blood Glucose							
	Insulin/Medication							
Lunch	Blood Glucose							
	Insulin/Medication							
Dinner	Blood Glucose							
	Insulin/Medication							
Bedtime	Blood Glucose							
	Insulin/Medication							
Other	Blood Glucose							
	Insulin/Medication							
Comments								

DATE		M	T	W	T	F	S	S
Breakfast	Blood Glucose							
	Insulin/Medication							
Lunch	Blood Glucose							
	Insulin/Medication							
Dinner	Blood Glucose							
	Insulin/Medication							
Bedtime	Blood Glucose							
	Insulin/Medication							
Other	Blood Glucose							
	Insulin/Medication							
Comments								

DATE		M	T	W	T	F	S	S
Breakfast	Blood Glucose							
	Insulin/Medication							
Lunch	Blood Glucose							
	Insulin/Medication							
Dinner	Blood Glucose							
	Insulin/Medication							
Bedtime	Blood Glucose							
	Insulin/Medication							
Other	Blood Glucose							
	Insulin/Medication							
Comments								

DATE		M	T	W	T	F	S	S
Breakfast	Blood Glucose							
	Insulin/Medication							
Lunch	Blood Glucose							
	Insulin/Medication							
Dinner	Blood Glucose							
	Insulin/Medication							
Bedtime	Blood Glucose							
	Insulin/Medication							
Other	Blood Glucose							
	Insulin/Medication							
Comments								

Log Book

DATE		M	T	W	T	F	S	S
Breakfast	Blood Glucose							
	Insulin/ Medication							
Lunch	Blood Glucose							
	Insulin/ Medication							
Dinner	Blood Glucose							
	Insulin/ Medication							
Bedtime	Blood Glucose							
	Insulin/ Medication							
Other	Blood Glucose							
	Insulin/ Medication							
Comments								